

# JKM270PP-60

## 255-270 Watt

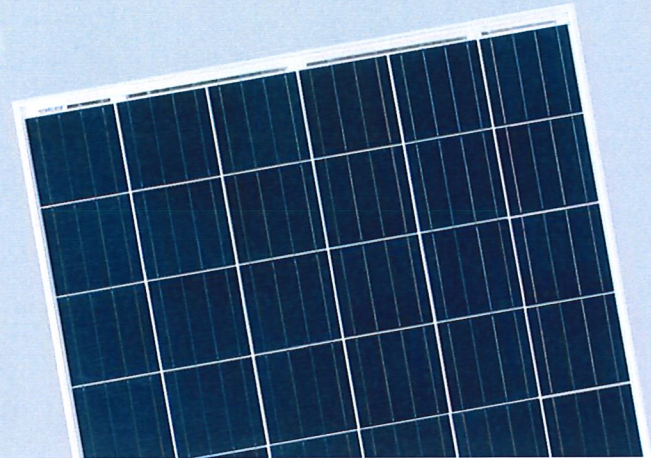
### POLY CRYSTALLINE MODULE

Positive power tolerance of 0/+3%

ISO9001:2008, ISO14001:2004, OHSAS18001 certified factory.  
IEC61215, IEC61730 certified products.



(4BB)



## KEY FEATURES



### 4 Busbar Solar Cell:

4 busbar solar cell adopts new technology to improve the efficiency of modules, offers a better aesthetic appearance, making it perfect for rooftop installation.



### High Power Output:

Polycrystalline 60-cell module achieves a power output up to 270Wp.



### Anti-PID Guarantee:

Limited power degradation of Eagle module caused by PID effect is guaranteed under 60°C/85% RH condition for mass production.



### Low-light Performance:

Advanced glass and surface texturing allow for excellent performance in low-light environments.



### Severe Weather Resilience:

Certified to withstand: wind load (2400 Pascal) and snow load (5400 Pascal).



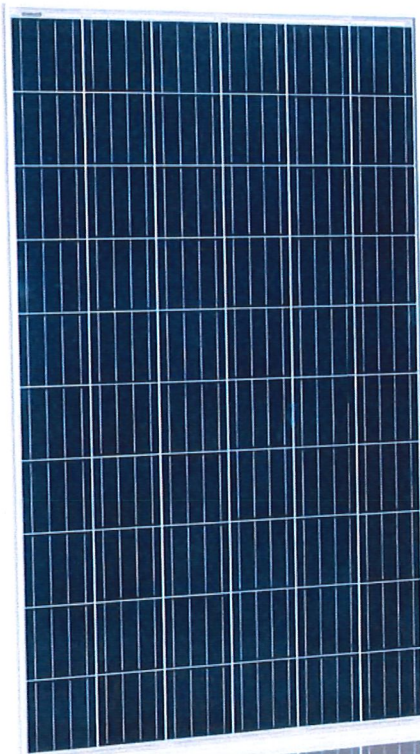
### Durability against extreme environmental conditions:

High salt mist and ammonia resistance certified by TUV NORD.



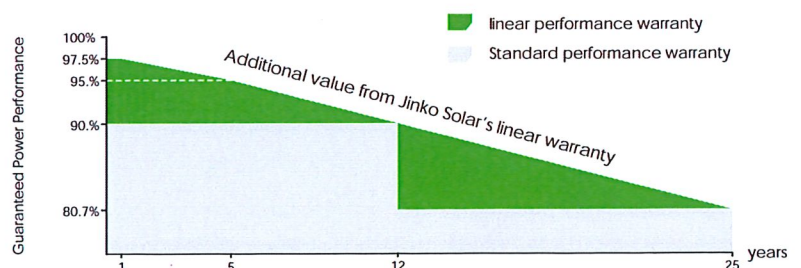
### Temperature Coefficient:

Improved temperature coefficient decreases power loss during high temperatures.

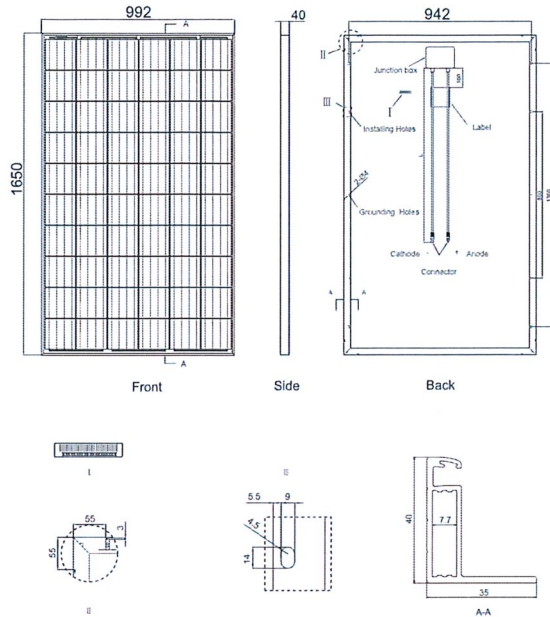


## LINEAR PERFORMANCE WARRANTY

10 Year Product Warranty • 25 Year Linear Power Warranty



## Engineering Drawings

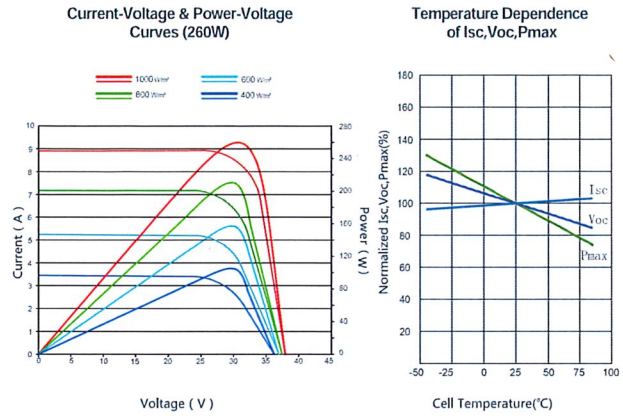


## Packaging Configuration

(Two boxes=One pallet)

25pcs/ box, 50pcs/pallet, 700 pcs/40'HQ Container

## Electrical Performance & Temperature Dependence



## Mechanical Characteristics

Cell Type	Poly-crystalline 156×156mm (6 inch)
No. of cells	60 (6×10)
Dimensions	1650×992×40mm (65.00×39.05×1.57 inch)
Weight	19.0 kg (41.9 lbs)
Front Glass	3.2mm, High Transmission, Low Iron, Tempered Glass
Frame	Anodized Aluminium Alloy
Junction Box	IP67 Rated
Output Cables	TÜV 1×4.0mm <sup>2</sup> , Length: 900mm or Customized Length

## SPECIFICATIONS

Module Type	JKM255PP		JKM260PP		JKM265PP		JKM270PP	
	STC	NOCT	STC	NOCT	STC	NOCT	STC	NOCT
Maximum Power (Pmax)	255Wp	190Wp	260Wp	194Wp	265Wp	198Wp	270Wp	202Wp
Maximum Power Voltage (Vmp)	30.8V	28.1V	31.1V	28.3V	31.4V	28.7V	31.7V	29.0V
Maximum Power Current (Imp)	8.28A	6.75A	8.37A	6.84A	8.44A	6.91A	8.52A	6.97A
Open-circuit Voltage (Voc)	38.0V	35.0V	38.1V	35.1V	38.6V	35.3V	38.8V	35.6V
Short-circuit Current (Isc)	8.92A	7.22A	8.98A	7.26A	9.03A	7.31A	9.09A	7.35A
Module Efficiency STC (%)	15.58%		15.89%		16.19%		16.50%	
Operating Temperature(°C)	-40°C~+85°C							
Maximum system voltage	1000VDC (IEC)							
Maximum series fuse rating	15A							
Power tolerance	0~+3%							
Temperature coefficients of Pmax	-0.40%/°C							
Temperature coefficients of Voc	-0.30%/°C							
Temperature coefficients of Isc	0.06%/°C							
Nominal operating cell temperature (NOCT)	45±2°C							

STC: Irradiance 1000W/m<sup>2</sup> Cell Temperature 25°C AM=1.5

NOCT: Irradiance 800W/m<sup>2</sup> Ambient Temperature 20°C AM=1.5 Wind Speed 1m/s

\* Power measurement tolerance: ± 3%



## SolarEdge Single Phase Inverters

SE2200H, SE3000H, SE3500H, SE3680H



INVERTERS

### Optimized installation with HD-Wave technology

- Record-breaking efficiency
- Extremely small, lightweight and easy to install
- High reliability without any electrolytic capacitors
- Built-in module-level monitoring
- Outdoor and indoor installation





# Single Phase Inverters

SE2200H, SE3000H, SE3500H, SE3680H

	SE2200H	SE3000H	SE3500H	SE3680H	
<b>OUTPUT</b>					
Rated AC Power Output	2200	3000	3500	3680	VA
Maximum AC Power Output	2200	3000	3500	3680	VA
AC Output Voltage (nominal)	220 / 230				Vac
AC Output Voltage Range	184 - 264.5				Vac
AC Frequency (nominal)	50 / 60 ± 5				Hz
Maximum Continuous Output Current	10	14	16	16	A
Residual Current Detector / Residual Current Step Detector	300 / 30				mA
Utility Monitoring, Islanding Protection, Country Configurable Thresholds	Yes				
<b>INPUT</b>					
Maximum DC Power	3400	4650	5425	5700	W
Transformer-less, Ungrounded	Yes				
Maximum Input Voltage	480				Vdc
Nominal DC Input Voltage	380				Vdc
Maximum Input Current	8.5	11.5	13.5	15	Adc
Reverse-Polarity Protection	Yes				
Ground-Fault Isolation Detection	600kΩ Sensitivity				
Maximum Inverter Efficiency	99.2				%
European Weighted Efficiency	98.3		98.8		%
Nighttime Power Consumption	< 2.5				W
<b>ADDITIONAL FEATURES</b>					
Supported Communication Interfaces	RS485, Ethernet, ZigBee (optional), WiFi (optional), Cellular (optional)				
<b>STANDARD COMPLIANCE<sup>(1)</sup></b>					
Safety	IEC-62109-1/2, AS-3100				
Grid Connection Standards	AS-4777, VDE-AR-N-4105, VDE 0126-1-1, UTE C15-712, G83/2, G59/3, CEI-021, EN 50438, IEC61727, IEC62116, ÖNORM, TF3.2.1, C10-11, NRS 097-2-1				
Emissions	IEC61000-6-2, IEC61000-6-3, IEC61000-3-11, IEC61000-3-12, FCC Part 15 Class B				
<b>INSTALLATION SPECIFICATIONS</b>					
AC Output - Supported Cable Diameter	9 - 16				mm
AC - Supported Wire Cross Section	1 - 16				mm <sup>2</sup>
DC Input	1 x MC4				
Dimensions (H x W x D)	280 x 370 x 142				mm
Noise	< 25				dBA
Weight	9.5				kg
Cooling	Natural Convection				
Operating Temperature Range	-20 to +60 <sup>(2)</sup> (-40°C option)				°C
Protection Rating	IP65 - Outdoor and Indoor				

<sup>(1)</sup> Certification pending  
<sup>(2)</sup> De-rating from 50°C



**RoHS**

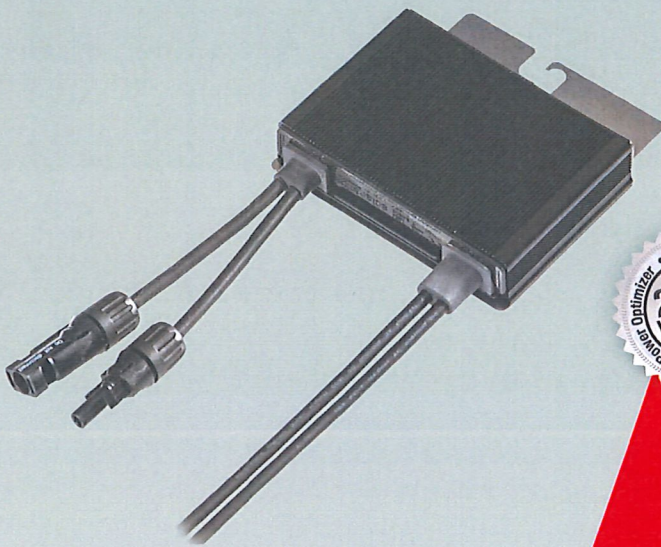




# SolarEdge Power Optimizer

Module Add-On

P300 / P350 / P370 / P404 / P405 / P500



POWER OPTIMIZER

## PV power optimization at the module-level

- Specifically designed to work with SolarEdge inverters\*
- Up to 25% more energy
- Superior efficiency (99.5%)
- Mitigates all types of modules mismatch-loss, from manufacturing tolerance to partial shading
- Flexible system design for maximum space utilization
- Fast installation with a single bolt
- Next generation maintenance with module level monitoring
- Module-level voltage shutdown for installer and firefighter safety

\* For operation with non-SolarEdge inverters please contact SolarEdge



# SolarEdge Power Optimizer Module Add-On

P300 / P350 / P370 / P404 / P405 / P500

	P300 (for 60-cell modules)	P350 (for high-power 60-cell and for 72-cell modules)	P370 (for higher- power 60 and 72-cell modules)	P500 (for 96-cell modules)	P404 (for 60-cell and 72-cell, short strings)	P405 (for thin film modules)	
<b>INPUT</b>							
Rated Input DC Power <sup>(1)</sup>	300	350	370	500	405	405	W
Absolute Maximum Input Voltage (Voc at lowest temperature)	48	60		80	80	125	Vdc
MPPT Operating Range	8 - 48	8 - 60		8 - 80	12.5 - 80	12.5 - 105	Vdc
Maximum Continuous Input Current (Isc)	10	11			10.1		Adc
Maximum Efficiency				99.5			%
Weighted Efficiency				98.8			%
Overvoltage Category				II			
<b>OUTPUT DURING OPERATION (POWER OPTIMIZER CONNECTED TO OPERATING SOLAREEDGE INVERTER)</b>							
Maximum Output Current				15			Adc
Maximum Output Voltage		60			85		Vdc
<b>OUTPUT DURING STANDBY (POWER OPTIMIZER DISCONNECTED FROM SOLAREEDGE INVERTER OR SOLAREEDGE INVERTER OFF)</b>							
Safety Output Voltage per Power Opti- mizer				1			Vdc
<b>STANDARD COMPLIANCE</b>							
EMC	FCC Part15 Class B, IEC61000-6-2, IEC61000-6-3						
Safety	IEC62109-1 (class II safety), UL1741						
RoHS	Yes						
Fire Safety	VDE-AR-E 2100-712:2013-05						
<b>INSTALLATION SPECIFICATIONS</b>							
Maximum Allowed System Voltage	1000						Vdc
Dimensions (W x L x H)	128 x 152 x 27.5 / 5 x 5.97 x 1.08			128 x 152 x 35 / 5 x 5.97 x 1.37	128 x 152 x 43 / 5 x 5.97 x 1.69	128 x 152 x 50 / 5 x 5.97 x 1.96	mm / in
Weight (including cables)	630 / 1.4	655 / 1.5		750 / 1.7	775 / 1.7	845 / 1.9	gr / lb
Input Connector	MC4 <sup>(2)</sup>					Single or Dual MC4 <sup>(3)</sup>	
Output Connector	MC4						
Output Wire Length	0.95 / 3.0	1.2 / 3.9	0.95 / 3.0		1.2 / 3.9		m / ft
Operating Temperature Range	-40 - +85 / -40 - +185						°C / °F
Protection Rating	IP68 / NEMA6P						
Relative Humidity	0 - 100						%

<sup>(1)</sup> Rated STC power of the module. Module of up to +5% power tolerance allowed.

<sup>(2)</sup> For other connector types please contact SolarEdge.

<sup>(3)</sup> Dual version for parallel connection of 2 thin film modules; P/N: P405-5RMDMRM.

PV SYSTEM DESIGN USING A SOLAREEDGE INVERTER <sup>(4)</sup>		SINGLE PHASE HD-WAVE	SINGLE PHASE	THREE PHASE	
Minimum String Length (Power Optimizers)	P300,P350,P370,P500 <sup>(5)</sup> P404,P405	8		16	
Maximum String Length (Power Optimizers)		6		13 (12 with SE3K)	
Maximum Power per String		25		50	
Parallel Strings of Different Lengths or Orientations		5700	5250	11250	W
			Yes		

<sup>(4)</sup> It is not allowed to mix P404/P405 with P300/P350/P370/P500/P600/P700 in one string.

<sup>(5)</sup> The P300/P350/P370/P500 cannot be used with the SE3K three phase inverter (available in some countries; refer to E-Series inverter datasheet).



**ALU, FESTE SKINNE****66 02 551**

Festeskinne i aluminium for  
montering av solcellepanel.

**BESKRIVELSE:**

Festeskinne i Aluminium for montering av solcellepanel. Kommer i lengdene 2100mm, 4200mm .

STS Festesystem består av de fleste løsninger man ønsker for solcellemontering.

Innebefatter løsninger for:

Flatt tak, Taksten, Shingel, bølgeblekk, og andre.

**MEKANISK:**

Materiale: AL6005-T5 Anodisering 12um

Str: HxBxD 55mm X 2100mm X 28mm

Vekt: 0,85 kg/m

**STANDARDER:**

AS/NZS 11750, DIN 1055

**SKINNE SKJØT****66 02 551**

Skjøt til Festeskinne i aluminium for montering av solcellepanel.

**BESKRIVELSE:**

Skjøt til Festeskinne i Aluminium for montering av solcellepanel. Kommer i lengdene 2100mm, 4200mm .

STS Festesystem består av de fleste løsninger man ønsker for solcellemontering.

Innebefatter løsninger for:

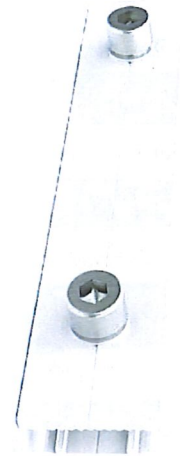
Flatt tak, Taksten, Shingel, bølgeblekk, og andre.

**MEKANISK:**

Materiale: AL6005-T5 , A2-70

Str: 150x30x15

Vekt: 0,15 kg



STANDARDER:

AS/NZS 11750, DIN 1055



## TAKSTEN, MONT KIT 12

Montasje kit justerbart for taksten, horison-  
tale skinner

66 02 554

**BESKRIVELSE:**

Feste kit for tak med taksten. Kit 12 er for horisontalt monterte skinner, justerbart.

STS Festesystem består av de fleste løsninger man ønsker for solcellemontering.

Innebefatter løsninger for:

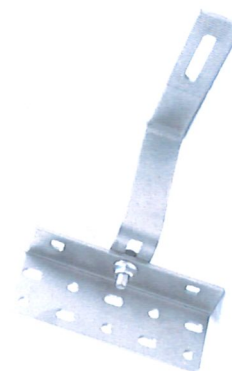
Flatt tak, Taksten, Shingel, bølgeblekk, og andre.

**MEKANISK:**

Materiale: SUS304

Str: 156-176x35-50x5

Vekt: 0,65 kg



STANDARDER:

AS/NZS 11750, DIN 1055

## KLAMMER FOR RAMMET MODUL 40MM

Mellomfeste til solcellemoduler

66 02 564

**BESKRIVELSE:**

Monteres på Aluskinne for å klemme fast solcellemodulser med alu ramme.

STS Festesystem består av de fleste løsninger man ønsker for solcellemontering.

Innebefatter løsninger for:

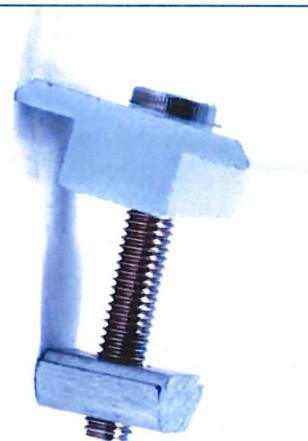
Flatt tak, Taksten, Shingel, bølgeblekk, og andre.

**MEKANISK:**

Materiale: AL6005-T5 Anodisering 12um

Str: HxBxD : 40mm

Vekt: 0,062 kg



STANDARDER:  
AS/NZS 11750, DIN 1055

**ENDEKLAMMER FOR RAMMET MODUL 40MM**

Endefeste til solcellemoduler

66 02 569

**BESKRIVELSE:**

Monteres på Aluskinne for å klemme fast solcellemoduler med alu ramme.

STS Festesystem består av de fleste løsninger man ønsker for solcellemontering.

Innebefatter løsninger for:

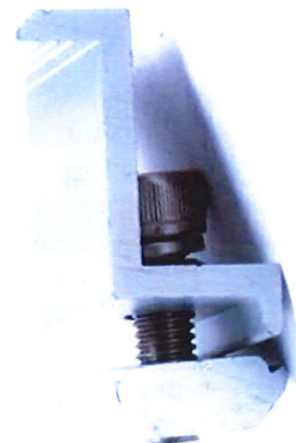
Flatt tak, Taksten, Shingel, bølgeblekk, og andre.

**MEKANISK:**

Materiale: AL6005-T5 Anodisering 12um

Str: HxBxD : 40mm

Vekt: 0,053 kg



STANDARDER:

AS/NZS 11750, DIN 1055